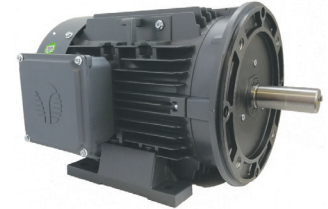
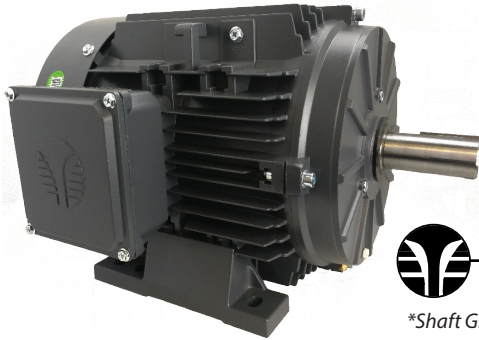




HP: 1–30
Pole: 2/4/6

Frame: 143T–286T
3Φ Volt: 230/460V

RPM: 3600/1800/1200
Encl: (TEFC) IP 55



Multiplier Code: AG

STANDARD FEATURES

- NEMA Premium Efficiency
- Dual Voltage - Three Phase 230/460V
- 3600/1800/1200 RPM - 2/4/6 Pole
- Inverter Duty -15:1 Constant Torque (MG1 Part 31)
- Totally Enclosed Fan Cooled IP 55 Protection
- VPI Lap wound Stator with Anti-fungal Coating
- Double Lip Oil Seal on DE & ODE
- Internal Shaft Grounding Brush
- 1.25 SF - 143T and Up
- 50 Hz Capable at 1.0 SF
- 40° C Ambient Temperature Rating
- 1045 Carbon Steel Shaft
- Multi-mount Frame with Removable Feet
- Oversized Drive End Bearing
- One-Way Brass Condensation Drains
- Aluminum Conduit Box 90° Rotatable
- Class F Insulation System with Class H Stator
- F1, F2, F3 Box Position Convertible (Shipped F1)
- Class 1, Division 2, Group C & D Compliant*
- Installation up to 3300 ft Altitude
- 36 Month Warranty from Purchase Date
- Marine Duty Compliant

* Requires removal of internal Grounding Brush. Note requirement on your order.

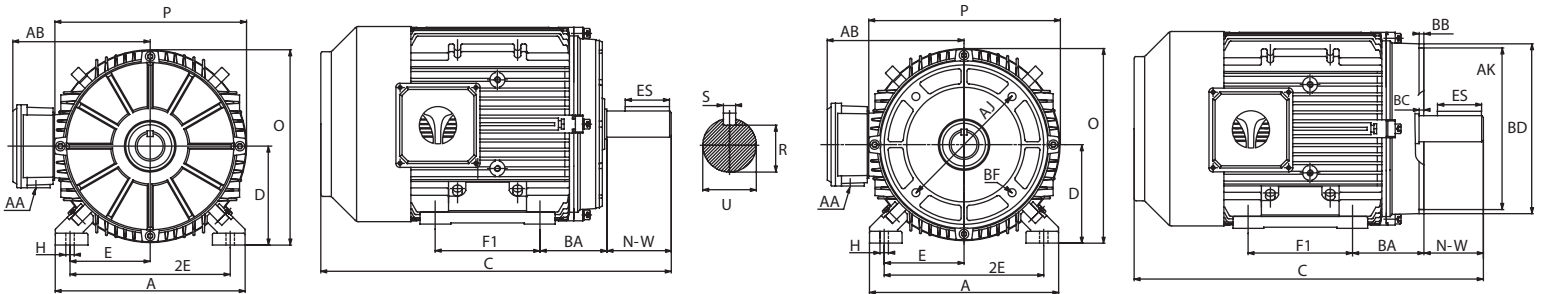


HP	Sync Speed	Model No.	List Price	
			Rigid Base	C-Face
1	3600	GX3-AL-TF-143T-2-B-D-1	\$430	\$483
	1800	GX3-AL-TF-143T-4-B-D-1	\$430	\$483
	1200	GX3-AL-TF-145T-6-B-D-1	\$499	\$538
1.5	3600	GX3-AL-TF-143T-2-B-D-1.5	\$453	\$506
	1800	GX3-AL-TF-145T-4-B-D-1.5	\$468	\$521
	1200	GX3-AL-TF-182T-6-B-D-1.5	\$682	\$762
2	3600	GX3-AL-TF-145T-2-B-D-2	\$502	\$555
	1800	GX3-AL-TF-145T-4-B-D-2	\$501	\$554
	1200	GX3-AL-TF-184T-6-B-D-2	\$785	\$850
3	3600	GX3-AL-TF-182T-2-B-D-3	\$684	\$770
	1800	GX3-AL-TF-182T-4-B-D-3	\$671	\$758
	1200	GX3-AL-TF-213T-6-B-D-3	\$991	\$1,086
5	3600	GX3-AL-TF-184T-2-B-D-5	\$750	\$834
	1800	GX3-AL-TF-184T-4-B-D-5	\$757	\$842
	1200	GX3-AL-TF-215T-6-B-D-5	\$1,293	\$1,373
7.5	3600	GX3-AL-TF-213T-2-B-D-7.5	\$1,023	\$1,159
	1800	GX3-AL-TF-213T-4-B-D-7.5	\$1,068	\$1,173
	1200	GX3-AL-TF-254T-6-B-D-7.5	\$1,536	\$1,694
10	3600	GX3-AL-TF-215T-2-B-D-10	\$1,173	\$1,309
	1800	GX3-AL-TF-215T-4-B-D-10	\$1,221	\$1,361
	1200	GX3-AL-TF-256T-6-B-D-10	\$1,995	\$2,153
15	3600	GX3-AL-TF-215T-2-B-D-15	\$1,791	\$1,862
	3600	GX3-AL-TF-254T-2-B-D-15	\$1,763	\$1,920
	1800	GX3-AL-TF-254T-4-B-D-15	\$1,766	\$1,924
20	1200	GX3-AL-TF-284T-6-B-D-15	\$2,495	\$2,697
	3600	GX3-AL-TF-256T-2-B-D-20	\$2,049	\$2,206
	1800	GX3-AL-TF-256T-4-B-D-20	\$2,069	\$2,226
25	1200	GX3-AL-TF-286T-6-B-D-20	\$2,852	\$3,054
	3600	GX3-AL-TF-284TS-2-B-D-25	\$2,441	\$2,644
	1800	GX3-AL-TF-284T-4-B-D-25	\$2,470	\$2,672
30	3600	GX3-AL-TF-286TS-2-B-D-30	\$2,919	\$3,122
	1800	GX3-AL-TF-286T-4-B-D-30	\$2,911	\$3,113

Continued on back

MOTOR MODIFICATIONS

Mod. Model # + Frame Adder	Description	Frame Sizes (List Price)			
		182T	213T	254T	284T
		184T	215T	256T	286T
MODFGADT	C-Face Adaption + Kit	\$384	\$384	\$384	\$384
MODTB	Terminal Blocks (6 Post)	\$127	\$175	\$206	\$206
MODF2F3	F-1 to F-2 Conversion	\$384	\$384	\$384	\$384
MODTFCAO	TEFC to TEAO Conversion	\$349	\$349	\$431	\$431
MODCT	TEFC to TEAO Cooling Tower	\$617	\$644	\$753	\$780
MODTS	Shaft Reduction T to TS	\$1,498	\$1,498	\$1,498	\$1,498
MODSH	Space Heaters	\$482	\$482	\$482	\$482
		40W	40W	60W	60W
MODWTS	Winding Thermostats	\$541	\$541	\$632	\$653
MODCOAT	Repainting motor(Epoxy or Poly)	\$408	\$435	\$494	\$521
Frame Adder:		182/4	213/5	254/6	284/6



Frame	A	AA	AB	AJ	AK	BA	BB	BC	BF	C	D	E	ES	2E	F1	F2	H	O	P	R	S	U	N-W
143T				---	---		---	---	---														
143TC	6.9	3/4	5.65	5.875	4.5	2.25	0.16	0.125	4 x 3/8	13.7	3.5	2.75	1.41	5.5	4	5	0.59	7	6.9	0.771	0.188	0.875	2.25
145T				---	---		---	---	---														
145TC				5.875	4.5		0.16	0.125	4 x 3/8														
182T				---	---		---	---	---									8.85					
182TC	8.85	3/4	6.6	7.25	8.5	2.75	0.25	0.12	4 x 1/2	16.1	4.5	3.75	1.78	7.5	4.5	5.5	0.63	8.85	0.986	0.25	1.125	2.75	
184T				---	---		---	---	---									8.85					
184TC				7.25	8.5		0.25	0.12	4 x 1/2									9					
213T				---	---		---	---	---														
213TC	10.3	1.0	7.4	7.25	8.5	3.5	0.25	0.25	4 x 1/2	19	5.25	4.25	2.41	8.5	5.5	7	0.63	10.4	10.3	1.201	0.312	1.375	3.38
215T				---	---		---	---	---														
215TC				7.25	8.5		0.25	0.25	4 x 1/2														
254T				---	---		---	---	---	24					8.25	10							
254TC	12.4	1 1/4	8.82	7.25	12.5	4.25	0.25	---	4 x 1/2	---	6.25	5	2.91	10			0.83	12.5	12.4	1.416	0.375	1.625	4
256T				---	---		---	---	---	25.8					10.25	12							
256TC				7.25	12.5		0.25	---	4 x 1/2	---													
284T				---	---		---	---	---									0.985					
284TC	13.4	1 1/2	11.3	---	10.5	4.75	0.25	---	4 x 1/2	29.3	7	5.5	3.28	11	9.5	11	0.984	14.1	13.4	1.591	0.5	1.875	4.62
286T				---	---		---	---	---									---					
286TC				---	10.5		0.25	---	4 x 1/2									---					